

# Electronic Keys & Reference Collections



[www.eutaxa.com](http://www.eutaxa.com)

## Eutaxa V3 Installation Guide

### Windows 10 & 11

The Eutaxa Software V. 3.0 was developed in 2023, in order to install and run the programs on newer Windows operating systems 10 and 11.

The installation requires administrator rights.

Mind that your Wibu Key is not connected to the USB-port when running the installation of the Eutaxa V3 software. When the setup is finished and the computer has been restarted you can plug in the Wibu Key. It may remain on the port during the installation of the products (e. g. Culicidae 23, Trichoptera 23, etc.)

## 1. Adding the English Language

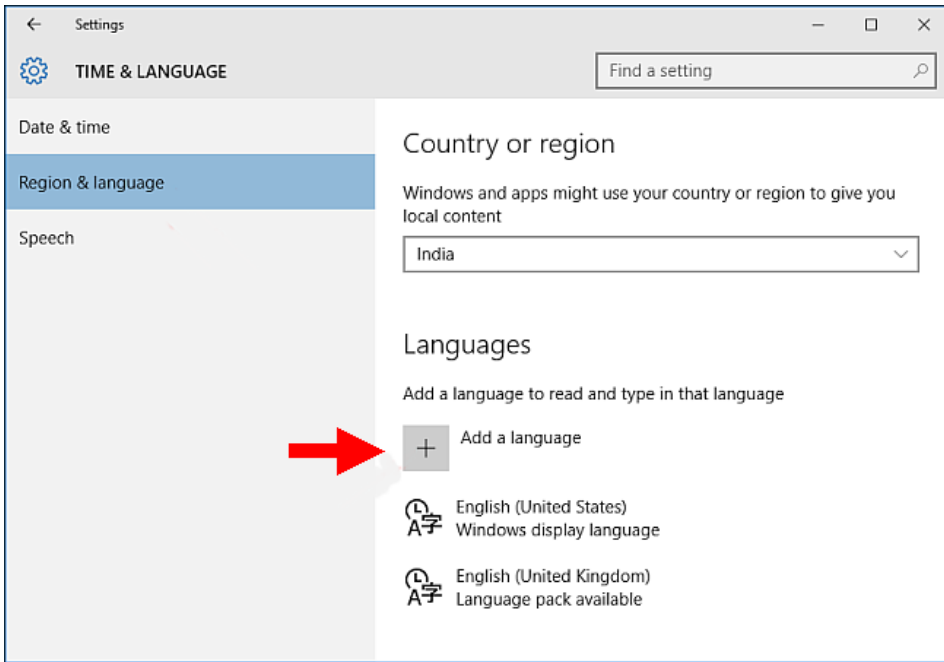
In previous versions of the Eutaxa software the installation of the Wibu Key driver required the English language as an additional operating language, specially when using Slavonian or Hungarian languages as primary operating language. It may be useful to add the English language as a second operating language before starting the setup process, to circumvent troubles during the driver installation.

If you wish to add the English language, please carry out the following instructions. This activity is not necessary when using operating systems with German, French or English language.

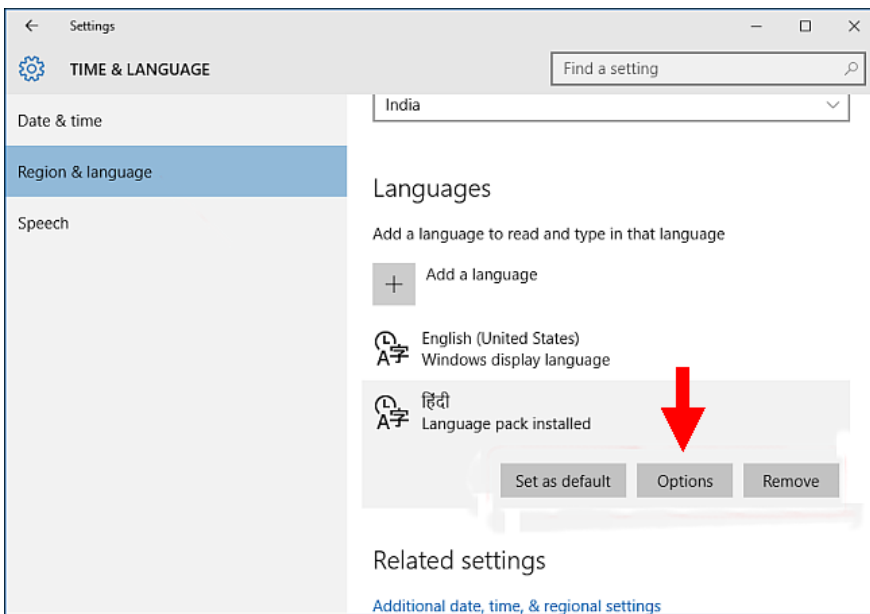
Open the Control Panel and select [Time & Language](#) (see next figure, indicated by a red arrow).



In the next window choose [Region & language](#). If English (United Kingdom) is listed and already installed (as shown in the image) close the window. If the language does not appear in the list of operating languages, hit the key [Add a language](#) (next figure, indicated by a red arrow) to open the [Add a language](#) window. Search for [English \(United Kingdom or US\)](#) and select the item.

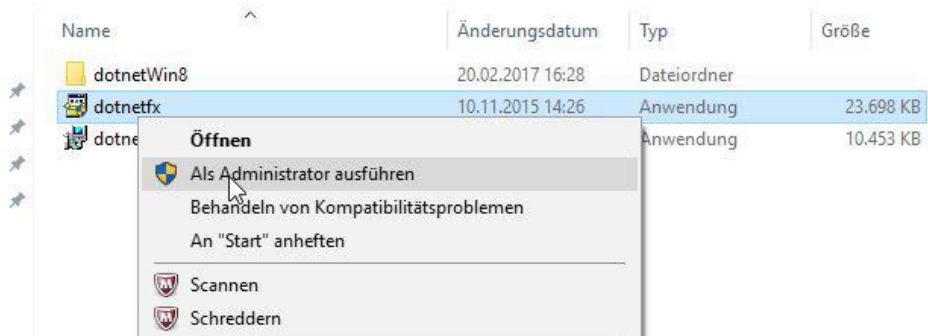


Back on the [Time & Language](#) screen, select the added language and hit the [Options](#)-button (next figure, red arrow) to download install the language pack. Do not enable the [Set as default](#) button, to keep your language setting. The English language is now part of the operating languages and the Wibu Key driver can access during the driver setup.



## 2. Installation of the Eutaxa V3

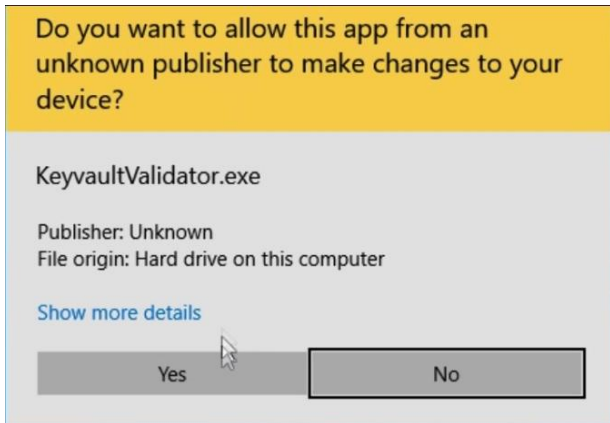
Extract the downloaded zip-file Eutaxa V3 and run the setup from the extracted file.  
Start the installation by running the Setup.exe as an administrator.



First you may get a message that the Microsoft Defender prevented an unrecognized app from starting. Select "More info" (shown in the left image) to display the button "Run anyway" and force the installation by clicking this button (right image).



In a next step, your system asks whether you allow the app from an unknown publisher to make changes to your computer. Confirm with "Yes" (next image).

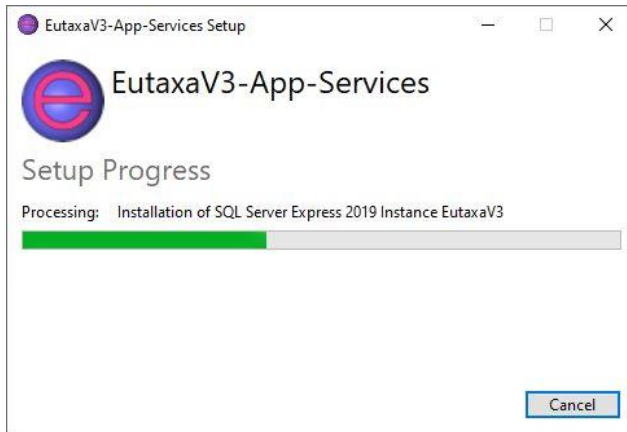


Now the installation of the Eutaxa V3 starts.

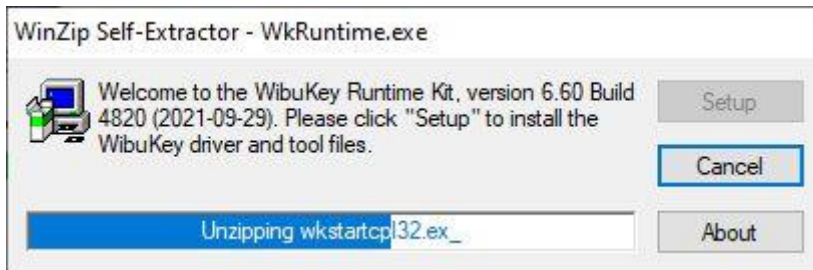
Agree the license terms and conditions and continue with "Install".



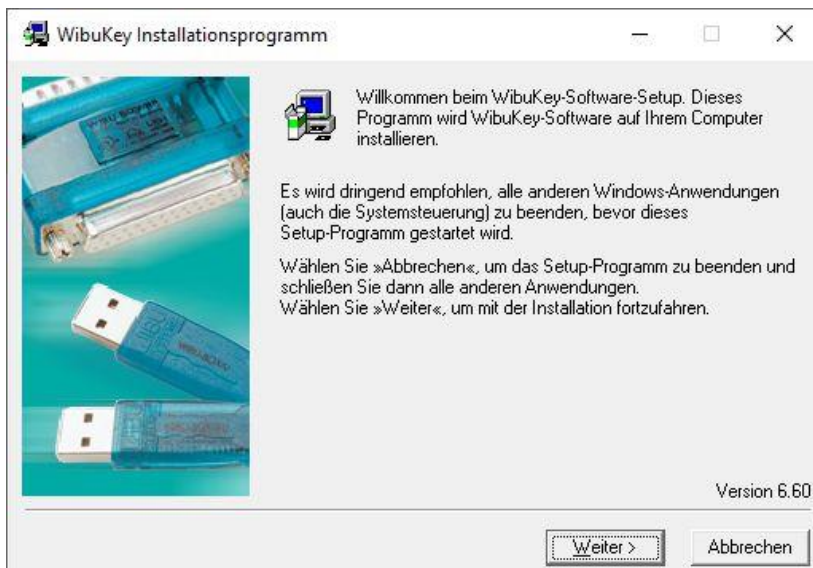
Accordingly, the Installation of the SQL Server starts. Mind that this process may last several minutes. Before finishing this process, a black window fades up on the screen for a short moment. Don't worry – this insert is correct and necessary for a correct server installation.



After the server installation is completed the setup proceeds with the installation of the Wibu Key driver. First the WibuKey Runtime Kit will be extracted. The process continues automatically. Please do not hit any keys (the Setup-button will be activated automatically).



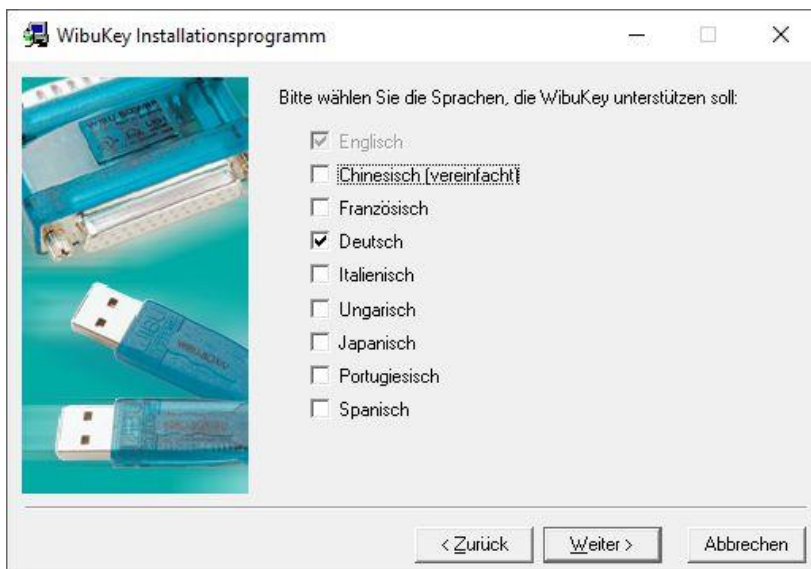
Confirm the following step with "Continue/Next".



Agree the license conditions and hit "Continue/Next".



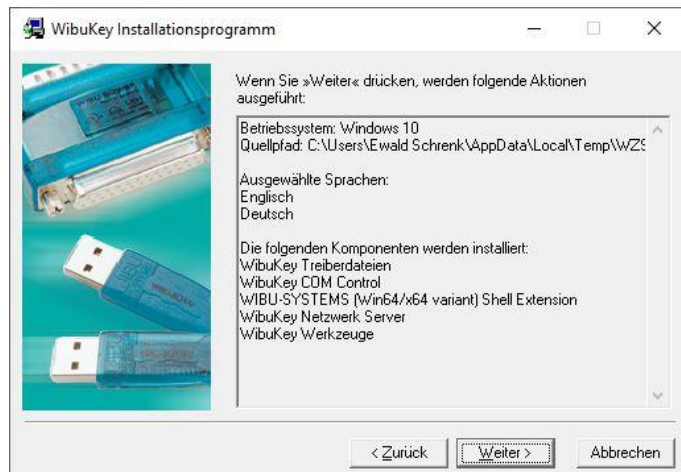
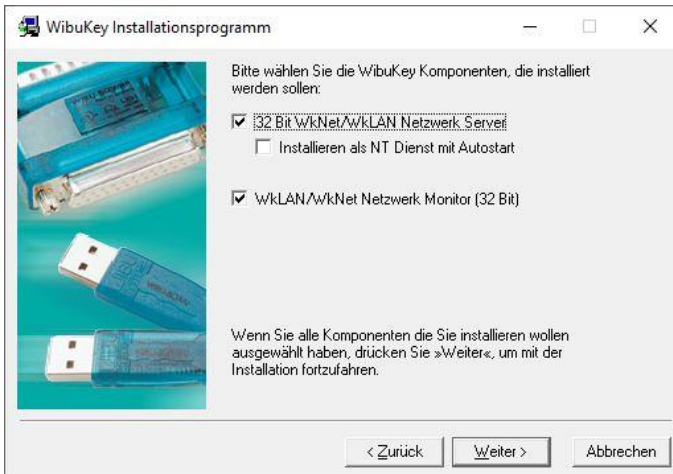
You may select an additional language (English is preset) and hit "Continue/Next".



Leave the file path settings in the next window and confirm with "Continue/Next".

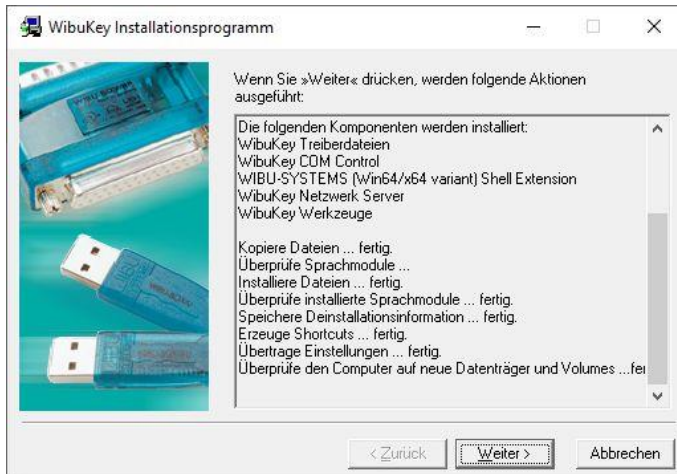


Next windows: leave the settings and hit "Continue/Next".

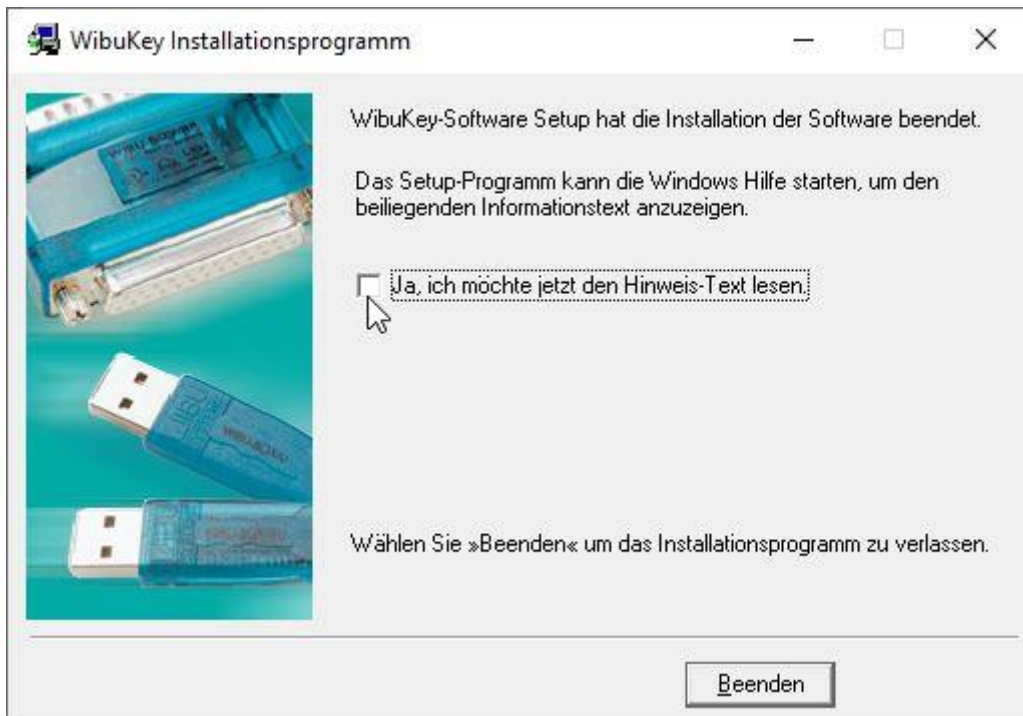




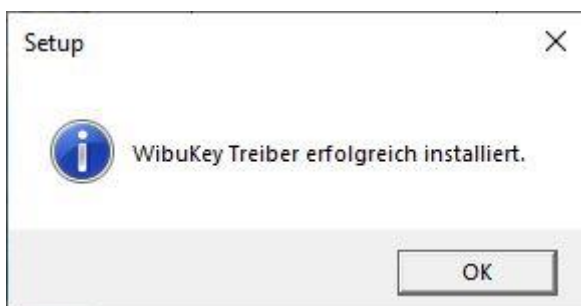
Wait until the next action is completed and the Continue/Next-button set active and hit the button.



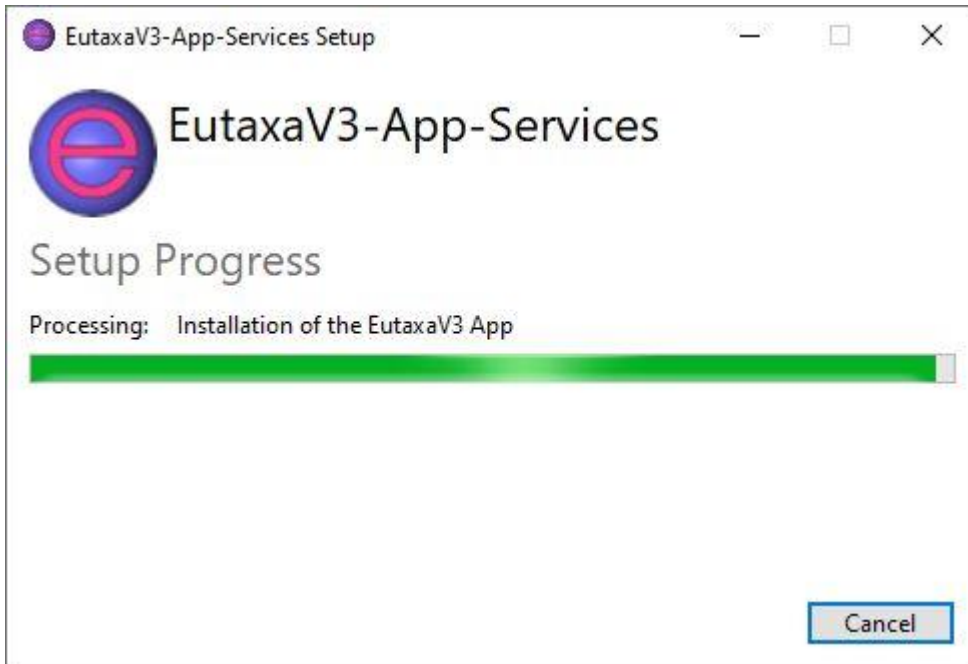
Now the installation of the Wibu Key is completed. Check or uncheck the option to read a text file and hit the "Finish"-button.



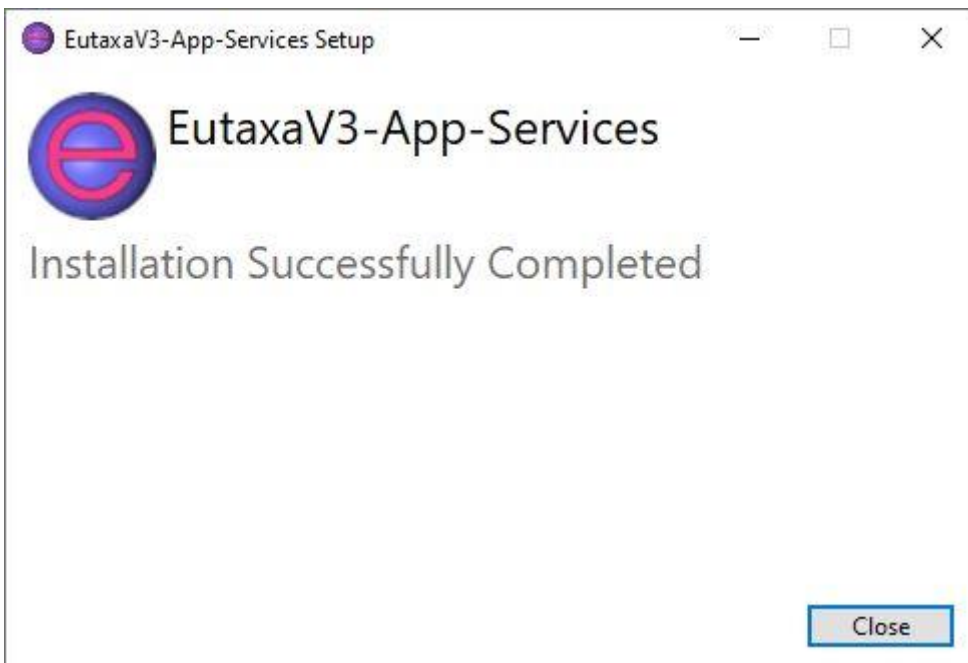
Confirm the next dialogue with "OK".



In a final step the Eutaxa V3 will be installed.



Wait until the setup is completed and hit the "Close" button to finish the setup.



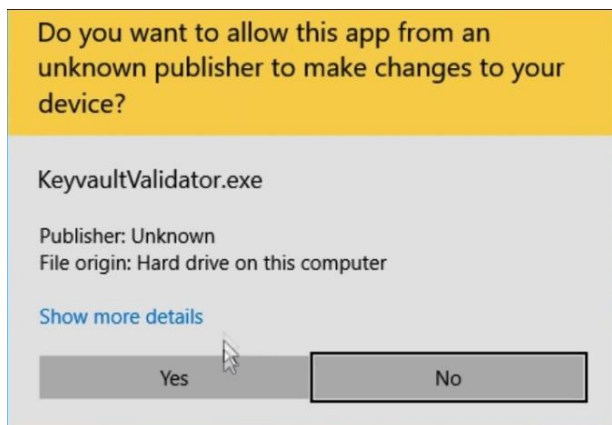
Restart your computer and connect the Wibu Key (if available) to a free USB-port on your computer. The now following installation of the product software does not require a plugged-on Wibu Key (it is just necessary when using the electronic keys).

### 3. Installation of the Products

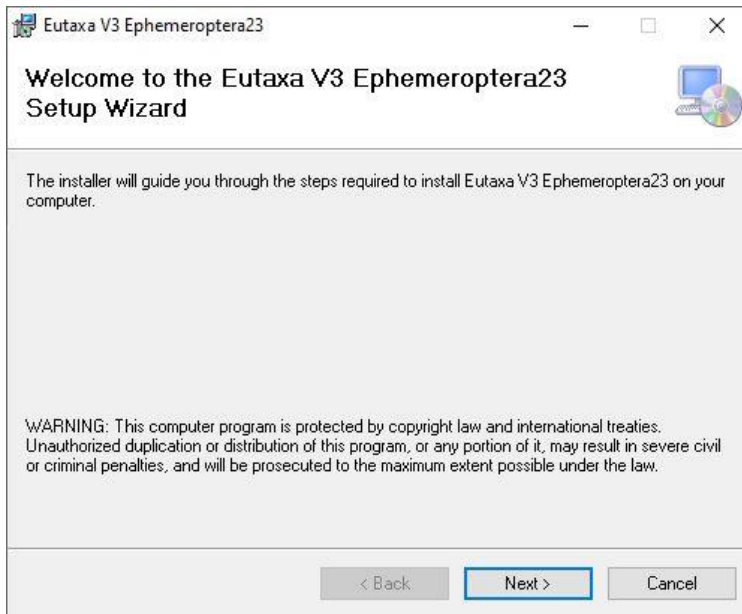
First you may get a warning message that the Microsoft Defender prevented an unrecognized app from starting. Select "More info" (shown in the left image) to display the button "Run anyway" and force the installation by clicking this button (right image).



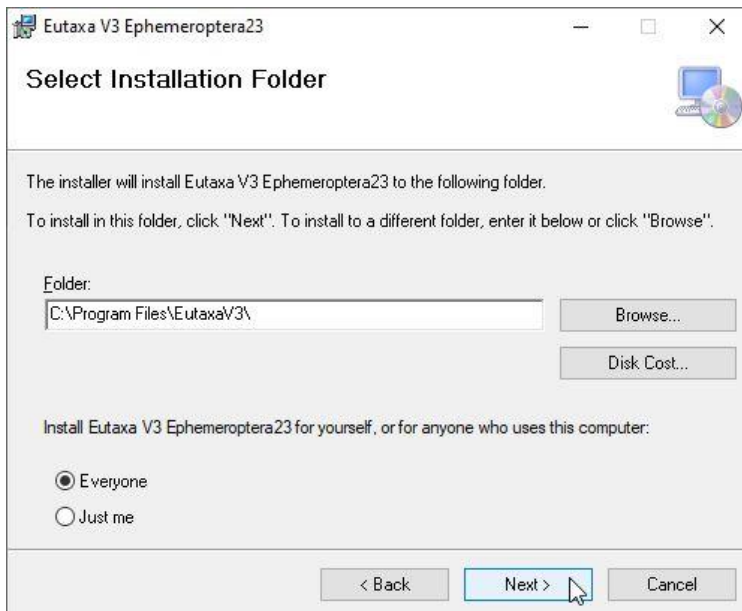
In a next step, your system asks whether you allow the app from an unknown publisher to make changes to your computer. Confirm with "Yes" (next image).



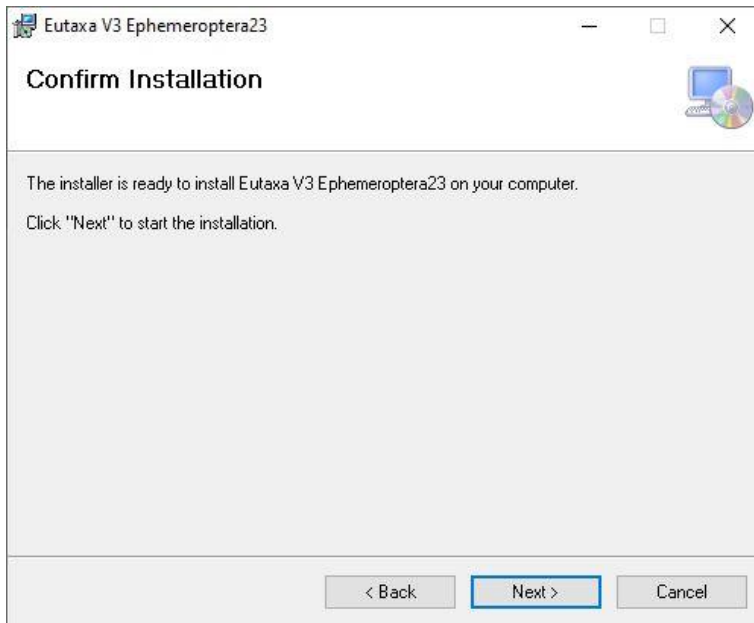
Confirm the start of the product setup with "Next".



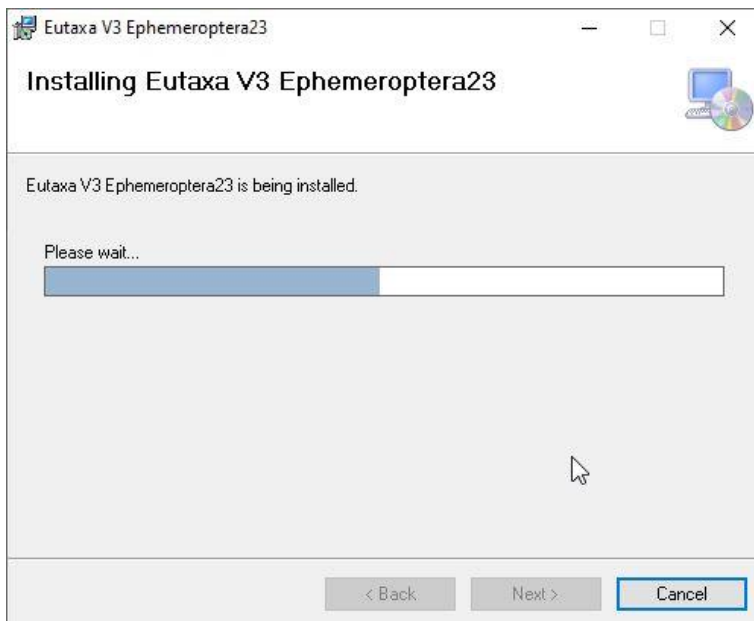
Leave the file path settings and allow the usage of the product for everyone. Confirm with "Next".



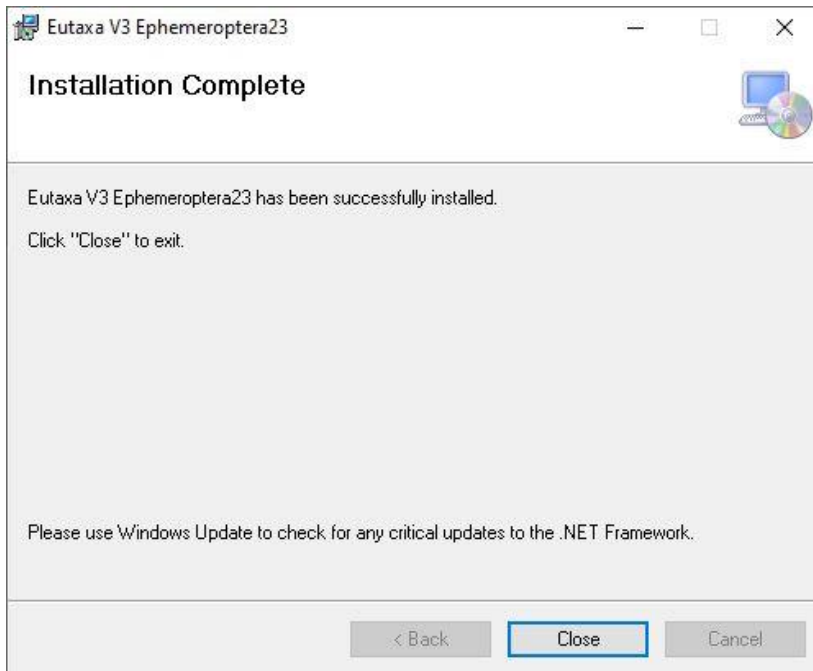
Now the installation is ready to start. Proceed with "Next".



Database and images of the product will now be installed. Do not interrupt the process by accidentally hitting the "Cancel"-button.



Finally, you get a message that the product has been successfully installed. Close the setup and continue (if available) with the installation of the next product.



Mind that Eutaxa products in Version 3.0 do not have a separate desktop icon. To access an installed application, double-click on the Eutaxa V3 desktop icon (which has been stored on the desktop after installing the Eutaxa V3 software) and run the Eutaxa software. Accordingly, select the wished application in the drop-down list "Applications" in the menu bar.